

Hitachi Projector Quick Connection iOS App

Quick Start Guide For ADHOC Mode (Peer to Peer) with DHCP Off

HITACHI
Inspire the Next



A fast and easy step-by-step guide for installing your Hitachi Projector Quick Connection iOS App.



Getting Started

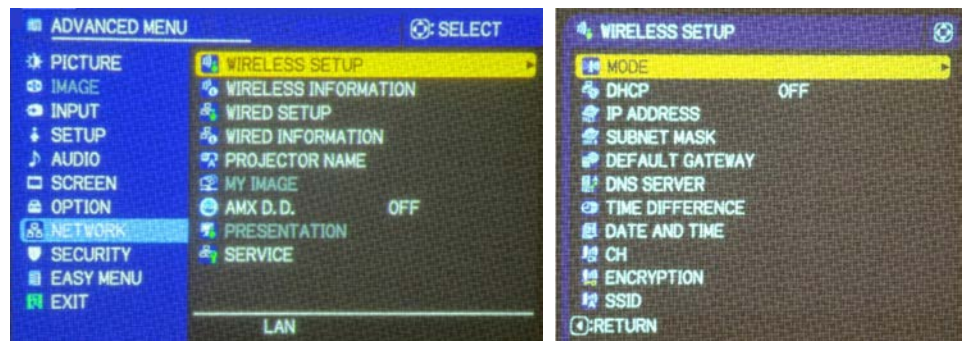
1. Go to the Apple® App StoreSM. You can find the free app by using the following key words or the title of the app:
 - A. Projector (it takes some searching)
 - B. Hitachi Consumer Electronics
 - C. Projector Quick Connection (title)
2. Download the app on to your iPad® or iPhone®
3. Be sure the optional Hitachi USB wireless adapter (USBWL11N) is installed on the projector
4. Connecting by ADHOC mode (peer to peer) with DHCP off



Connecting by ADHOC Mode (Peer to Peer) with DHCP Off

First, go to ADVANCED MENU, then NETWORK, then WIRELESS SETUP.

Check if the DHCP is set to ON. If it's ON, please change to OFF.

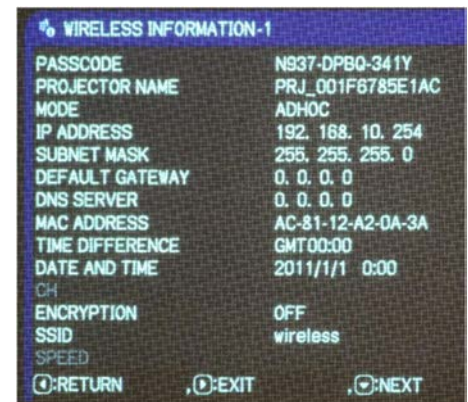


Go to WIRELESS INFORMATION.

Check if the MODE is set to ADHOC. If it's INFRASTRUCTURE, please go to the WIRELESS SETUP and change it to ADHOC.

Check what is set for your SSID. For the default, the wireless is set.

Please check the IP ADDRESS and SUBNET MASK and record them. For the default, 192.168.10.254, 255.255.255.0 are set.



Hitachi Projector Quick Connection iOS App

Quick Start Guide For ADHOC Mode (Peer to Peer) with DHCP Off

HITACHI
Inspire the Next

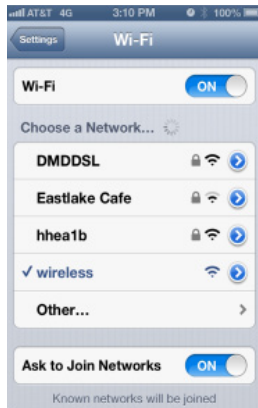


iPad Settings

Click SETTINGS, and choose Wi-Fi.

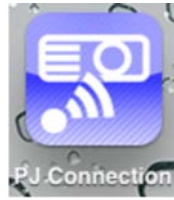
Click the projector's SSID, for example wireless shown in [Choose a Network...].

Click the right arrow.



Please check if DHCP is chosen. If it is, please click on Static.

Please put the IP Address and Subnet Mask. For example, when the projector's setting is set to 192.168.10.254, 255.255.255.0. (default setting), set the 192.168.10.xxx, 255.255.255.0. Select 1 to 253 for "xxx" not duplicating with any other equipment.

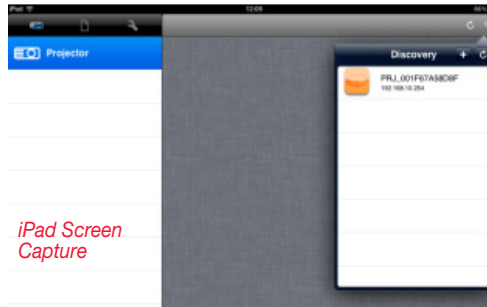


Click the PJ Connection icon.

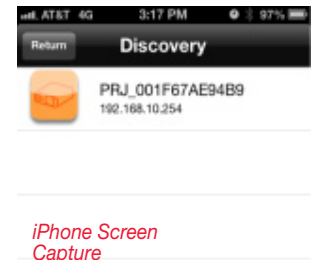
Click the [discovery button] shown at the top right or bottom of the application window.



The orange icon with the name of the projector and IP address will come up.



iPad Screen Capture

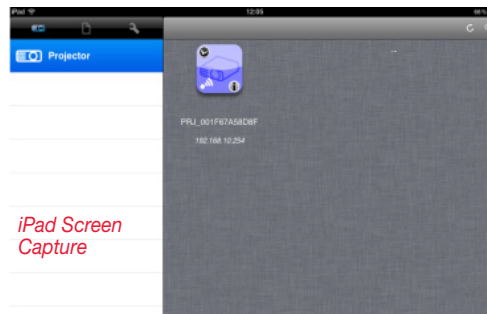


iPhone Screen Capture

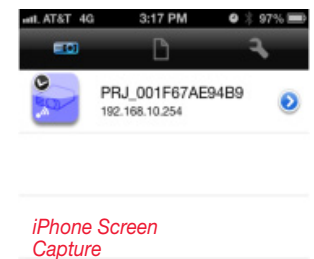
Tap the icon, and choose the input buttons which match your projector, push [save button].



Tap the orange projector icon, and the color will change to blue. Now you can go to the control tab or the content tab.



iPad Screen Capture



iPhone Screen Capture

HI0129-01/13 WEB
All specifications subject to change without notice.
iPad and iPhone are registered trademarks of Apple Inc., registered in the U.S. and other countries. App Store is a service mark of Apple Inc.
©2012 Hitachi America, Ltd. All Rights Reserved.

Hitachi America, Ltd.

900 Hitachi Way, Chula Vista, CA 91914
Toll Free: 1.800.HITACHI • Email: dmd.info@hal.hitachi.com
Web: hitachi-america.us/projectors

