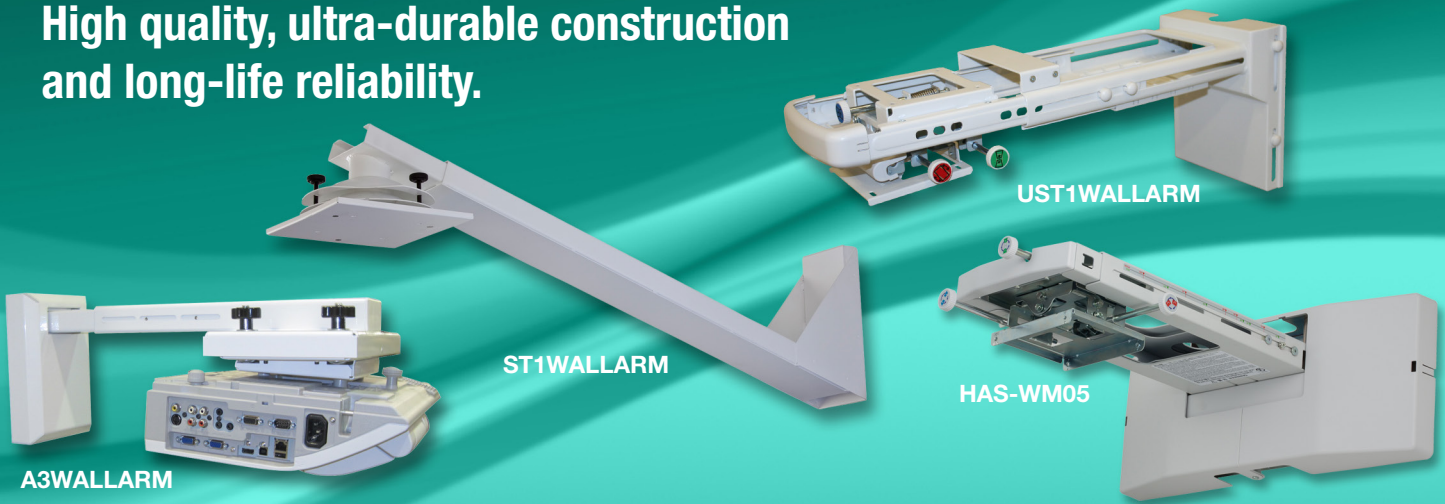


Wall Mounts

Compatible with select Hitachi projectors

HITACHI
Inspire the Next

High quality, ultra-durable construction
and long-life reliability.



Specifications	HAS-WM05	A3WALLARM	UST1WALLARM	ST1WALLARM
Swivel	+/- 5.0°	+/- 2.0°	+/- 3.0°	360°
Pitch	+/- 5.0°	+/- 4.7°	+/- 3.0°	+/- 12°
Roll	+/- 5.0°	+/- 5.0°	+/- 3.0°	+/- 12°
Arm Length (From the wall to the center of VESA 100/200)	12.5" - 24.5"	10.7" - 24.0"	9.8" - 21.4"	34.6" - 52.7"
Weight Capacity	23.4 lbs.	40 lbs.	22.1 lbs.	35 lbs.
Height Adjustment	+/- 1.4"	+/- 0.7"	+/- 1.2"	6.3" (when fully extended)
Left/Right Position Adjustment	+/- 2.0"	+/- 0.9"	+/- 0.9"	1.0"
Dimensions (WxHxD)	19.8" x 8.1" x 20.3"	10.8" x 8.9" x 28.0"	7.6" x 9.8" x 17.3"	8.3" x 11.8" x 37"
Weight	14.1 lbs.	22 lbs.	10.6 lbs.	17 lbs.
Cable Management	Yes	Yes	Yes	Yes

Hitachi Projector Compatibility

HAS-WM05	A3WALLARM	UST1WALLARM	ST1WALLARM
CP-AX2503, CP-AX3503 CP-AW2503, CP-AW3003 CP-TW2503, CP-TW3003 CP-AX2505, CP-AX3505 CP-AW2505, CP-AW3005 CP-TW2505, CP-TW3005	CP-A220N, CP-A221N CP-A222WN, CP-AW250N CP-AW251N, CP-AW252WN CP-A300N, CP-A301N CP-A302WN, iPJ-AW250N CP-AW2519N, BZ-1 CP-AX2503, CP-AX3503 CP-AW2503, CP-AW3003 CP-TW2503, CP-TW3003 CP-AX2505, CP-AX3505 CP-AW2505, CP-AW3005 CP-TW2505, CP-TW3005	CP-A220N, CP-A221N CP-A222WN, CP-AW250N CP-AW251N, CP-AW252WN CP-A300N, CP-A301N CP-A302WN, iPJ-AW250N CP-AW2519N, BZ-1	CP-D31N CP-DW10N CP-D32WN CP-BW301WN CP-BX301WN

HIO314-7/16-Rev. 4
All specifications subject to change without notice.
©2016 Hitachi America, Ltd. All Rights Reserved.

Hitachi America, Ltd.

Toll Free: 1.800.HITACHI • Email: dmd.info@hal.hitachi.com
Web: hitachi-america.us/projectors • Blog: dmd.hitachi-america.us/blog



Adapters

Used to replace older Hitachi models with newer Hitachi models, as well as competitive models to Hitachi models.

HITACHI
Inspire the Next



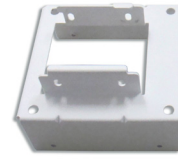
CPA100ADAPTPLATE



CPA100ADPA7



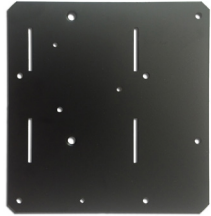
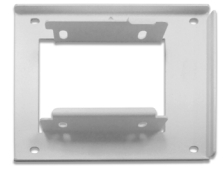
ADAPA3A7WPLATE



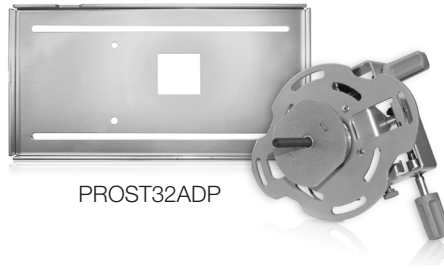
HASWB01



HASWB02



ST1PLATE2



PROST32ADP



MITST32ADJ

Adapter Name	For	From	To
CPA100ADAPTPLATE	A100WALLARM A100WALLARM2	CP-A100, CP-A200, CP-A52, ED-A100	CP-AW2503, CP-AW3003 CP-TW2503, CP-TW3003 CP-AW2505, CP-AW3005 CP-TW2505, CP-TW3005
CPA100ADPA7	A100WALLARM A100WALLARM2	CP-A100, CP-A200, CP-A52, ED-A100	CP-AX2503, CP-AX3503 CP-AX2505, CP-AX3505
ADAPA3A7XPLATE	A3WALLARM	CP-A220N, CP-A221N, CP-A222WN, CP-A300N, CP-A301N, CP-A302WN	CP-AX2503, CP-AX3503 CP-AX2505, CP-AX3505
ADAPA3A7WPLATE	A3WALLARM	CP-AW250N, CP-AW251N, CP-AW252WN, iPJ-AW250N, CP-AW2519N, BZ-1	CP-AW2503, CP-AW3003 CP-TW2503, CP-TW3003 CP-AW2505, CP-AW3005 CP-TW2505, CP-TW3005
HAS-WB01	AW250NWALLARM (HAS-K250) UST1WALLARM (HAS-K252)	CP-A220N, CP-A221N, CP-A222WN, CP-A300N, CP-A301N, CP-A302W	CP-AX2503, CP-AX3503 CP-AX2505, CP-AX3505
HAS-WB02	AW250NWALLARM (HAS-K250) UST1WALLARM (HAS-K252)	CP-AW250N, CP-AW251N, CP-AW252WN, iPJ-AW250N, CP-AW2519N, BZ-1	CP-AW2503, CP-AW3003 CP-TW2503, CP-TW3003 CP-AW2505, CP-AW3005 CP-TW2505, CP-TW3005
ST1PLATE2	Smart Wall Arm Mount	Smart UF55 Smart UF65	CP-D32WN CP-BW301WN, CP-BX301WN,
PROST32ADP	Promethean Wall Arm Mount	Promethean PRM10 Promethean PRM20 Promethean PRM30 Promethean PRM35 Promethean PRM45	CP-D32WN, CP-BW301WN, CP-BX301WN
MITST32ADJ	Mitsubishi MITS PRO EST Wall Arm Mount	WD380U-EST	CP-D32WN, CP-BW301WN, CP-BX301WN

HI0314-7/16-Rev. 4
All specifications subject to change without notice.
©2016 Hitachi America, Ltd. All Rights Reserved.

Hitachi America, Ltd.

Toll Free: 1.800.HITACHI • Email: dmd.info@hal.hitachi.com
Web: hitachi-america.us/projectors • Blog: dmd.hitachi-america.us/blog

